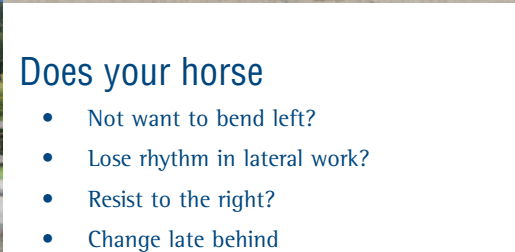




# AHT Equine Poor Performance



**AHT Equine** is in an ideal position to help riders, owners and trainers of horses performing and competing in all disciplines.

Staff – both clinicians and ancillary staff – have owned, ridden and competed horses to high standards themselves, so we speak your language and understand your problems.

**AHT Equine** has some of the most highly qualified staff and the most sophisticated equipment and facilities in the UK and Europe, if not the world.

*Please be aware that AHT Equine can only see your horse if you are referred by your own veterinary surgeon.*

**Animal Health Trust**  
Lanwades Park  
Kentford  
Newmarket  
Suffolk CB8 7UU  
Tel: +44 (0)1638 751908  
Fax: +44 (0)1638 555393  
E-mail: [info@aht.org.uk](mailto:info@aht.org.uk)  
Web site: [www.aht.org.uk](http://www.aht.org.uk)  
Registered Charity No. 209642



- ### Does your horse
- Not want to bend left?
  - Lose rhythm in lateral work?
  - Resist to the right?
  - Change late behind
  - Refuse to go forward?
  - Have an unsteady head?
  - Lose freedom in his shoulder?
  - Find difficulty with piaffe?
  - Get 7s when he used to get 9s?
  - Come above the bit?
  - Lose impulsion?
  - Go unlevel?
  - Refuse?

- ### Is it
- Pain related?
  - A training problem?
  - A physical limitation?
  - Rider related?

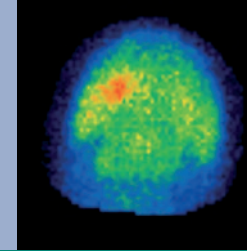
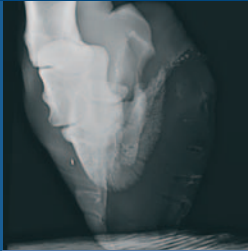


*Supporting equine sport*



*Dr Rachel Murray competing on Quijote*

*Sue Dyson competing on Kinvarra*



AHT Equine is the only veterinary institute in Europe with a high-field MRI scanner for horses. It is used with our state-of-the-art 'standing' MRI equipment.

AHT Equine is equipped with the latest digital X-ray, ultrasound, scintigraphy, MRI and shock-wave therapy equipment.

AHT Equine has access to the most highly qualified orthopaedic surgeons, physiotherapists, farriers, saddlers and equine dental technicians available.

The AHT Equine team is uniquely placed to evaluate performance problems, and to distinguish between physical and training causes.

*Dr Rachel Murray is Head of the Centre for Equine Studies at the Animal Health Trust, and specialises in research into lameness, sport horse performance problems and the use of MRI in the diagnosis of bone and soft-tissue injuries. She competes as a dressage rider at Intermediaire level.*

*Dr Sue Dyson has competed in eventing and showjumping at a high level, and produced three horses to advanced level that subsequently competed at European and World Championships, and Olympic Games. She is a co-author of the standard veterinary texts on radiography, scintigraphy and lameness diagnosis and management in the horse, and is recognised as a world-class leader in her field.*

