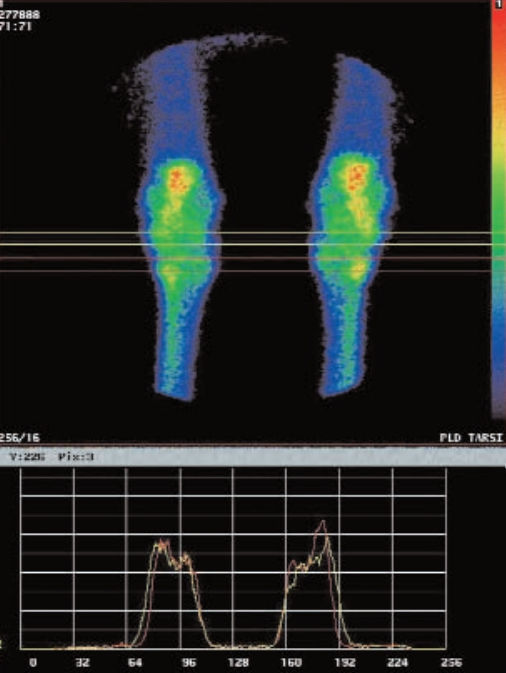


Why we need YOUR help

In order to stay at the cutting edge of scientific advancement, and to continue supporting equine sports and the equine veterinary profession, we need to retain the most highly qualified staff available and provide them with state-of-the-art technology. This is expensive and, as an independent charity, we receive no government funding.

If our work is important to YOU, please support US.

Please be aware that AHT Equine can only see your horse if you are referred by your own veterinary surgeon.



Animal Health Trust

Lanwades Park
Kentford
Newmarket
Suffolk CB8 7UU
Tel: +44 (0)1638 751908
Fax: +44 (0)1638 555393
E-mail: info@aht.org.uk
Web site: www.aht.org.uk
Registered Charity No. 209642



Animal Health Trust

AHT Equine

In support of Equine Sport



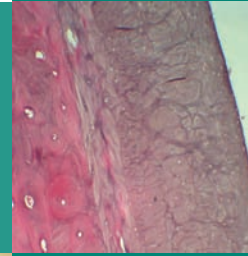
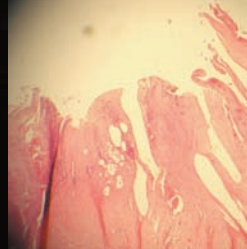
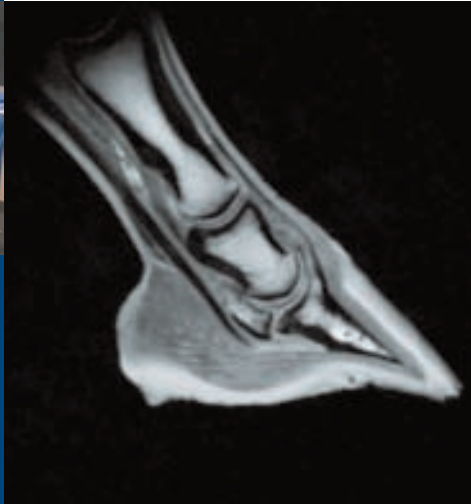
We provide a range of support for the equine sports disciplines

In return, we are asking YOU to support US

Find out more about what WE are doing for YOU



Supporting equine sport



Clinical Services

We offer a first class veterinary diagnostic and advisory service in the following areas:

- Poor performance or loss of performance
- Subtle to severe lameness
- Back pain
- Neurological disease
- Eye problems
- Skin tumours (including sarcoids)
- Surveillance, monitoring and management of infectious disease outbreaks
- Genetic screening tests and parentage assessment

Research

Our clinical research team provides scientific solutions to sport horse problems. Specific areas of specialisation, that may have an impact on you, include:

- Investigation of risk factors for lameness
- Studies into the effect of different surfaces and arenas
- Investigation into training-associated injury
- Identification and prevention of injuries that are specifically related to different sports
- Scientific approaches to the diagnosis, prevention and management of
 - Foot pain/navicular disease
 - Hind limb pain – tarsal (hock) pain, suspensory ligament

- Tendon problems
- Suspensory ligament problems
 - Joint damage
 - Catastrophic fractures
- Pioneering use of MRI to diagnose and understand foot pain, joint disease and lameness
- Development of scintigraphy for detection of subtle problems in the limbs and back
- Development of diagnostic tests and vaccines for infectious diseases
- Disease surveillance
- Study of the genetics of inherited conditions

How do we disseminate new information?

- Publication in:
 - books
 - veterinary and scientific journals
 - sport horse publications
- Presentations to vets, trainers and riders

Advisory work for the Equine Sport Horse Industry

We work closely with, and provide scientific advice to:

- British Equestrian Federation
- British Dressage
- British Show Jumping Association
- British Eventing
- British Equine Veterinary Association
- World class performance

How does our work help YOU?

Even if you have never had a horse referred to the Animal Health Trust, you are likely to have benefited from our work through your own vet. We support the equine veterinary profession by:

- Validation of diagnostic techniques
- Validation of imaging techniques
- Training veterinary surgeons
- Improving understanding of diagnosis and treatment of diseases
- Providing a resource for imaging facilities
- Making our expertise available