

How you can help

You will be asked to pay for your animal's care at the Trust. The cost will be comparable to that charged by any other referral centre. Although your fees cover the cost of the treatment of your pet, clinical income represents just 59% of our income. Therefore, investment in new facilities and equipment is only made possible by legacies and charitable donations.

You can help us by:

- Making a donation
- Joining our Friends Scheme
- Buying a gift from our on-line shop
- Coming to an AHT event
- Holding your own fundraising event!
- Joining our Fellowship scheme
- Leaving a gift in your Will
- Holding a collection box and/or selling pin badges

Contact the Fundraising Team on 01638 502380 or email: fundraising@aht.org.uk



Animal Health Trust

Lanwades Park
Kentford
Newmarket
Suffolk CB8 7UU
Tel: +44 (0)1638 555648
Fax: +44 (0)1638 502427
Web site: www.aht.org.uk
Registered Charity No. 209642

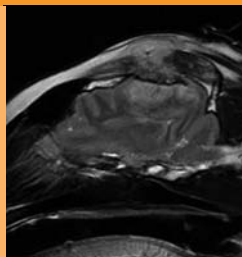


AHT Scientific excellence Clinical care



Your vet has referred you and your pet to see one of the Specialists who work at the Animal Health Trust. We thought it would be helpful for you for you to know a little bit about the Trust, its aims and the work we do, as well as what happens behind the scenes, outside the consulting room.





About the Trust

The Trust is a registered charity founded over 60 years ago which receives no core income from the Government and is heavily dependent on charitable donations. The aims of the Animal Health Trust are

- To provide a world-class clinical referral and diagnostic service that is patient-focused and client-orientated
- To train specialist post graduate veterinarians and veterinary nurses to internationally-recognised standards
- To improve our understanding of diseases in companion animals, and to apply advances in our knowledge to improve clinical management
- To communicate our findings and provide continuing professional education within the veterinary community.



Clinical Care

At the Trust we have vets with expertise in specific areas. In the Small Animal Centre these are: anaesthesia, dermatology, diagnostic imaging, internal medicine, neurology, oncology, ophthalmology and soft tissue surgery. The vets are supported by a team of nurses, theatre staff, secretaries and ward staff. Our kennels are staffed 24 hours a day, 365 days a year. We also have a Pathology Department and on-site laboratory to ensure that the results of any tests we need to perform are available to us as soon as possible.

This means that, although you may only see the clinician in charge of your pet, you may actually benefit from care provided by a whole team of specialists, including a veterinary anaesthetist, a veterinary diagnostic imager or a surgeon, as well the nursing staff.

Our facilities include:

- Fully staffed intensive care facilities
- 3 fully equipped operating theatres
- 3 operating microscopes
- Full anaesthetic monitoring for all cases
- Minimal invasive surgery equipment
- Magnetic Resonance Imaging (MRI) on-site
- Radiography, ultrasonography and scintigraphy
- Electrodiagnostic equipment and hearing clinic
- Dedicated laser for eye surgery
- Dedicated chemotherapy unit
- Radioiodine treatment & ward to treat hyperthyroid cats
- Endoscopy, bronchoscopy, cystoscopy and rhinoscopy
- Hydrotherapy pool



Staff

Each discipline at the Trust is made up of several clinicians who have further qualifications in their discipline above and beyond those that allow all vets to work in the UK. In addition, most disciplines have residents - vets who are studying to gain a further qualification in their discipline and are supervised by a clinician.

Research

The Animal Health Trust integrates scientific research and clinical work. This does not mean that we 'experiment' on our patients but that information we gather from your pet's condition can be added to information we gather from other animals in a similar situation so that we can help the veterinary profession move forward in their understanding of disease and improve animal welfare. This is called clinical research.

