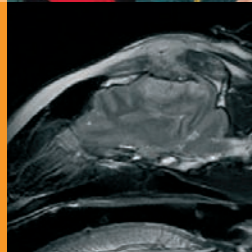
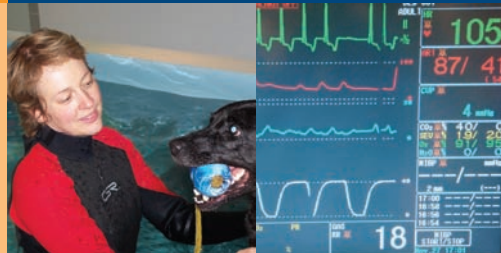


Referring a patient

Clinical facilities

AHT Small Animal Clinical Services



The Animal Health Trust is situated in 140 acres just outside Newmarket. Our hospital is equipped with the latest equipment needed to provide excellent tertiary care for our patients. On-site clinical pathology laboratories are available for sample analysis by specialist pathologists. Anaesthesia and intensive care is performed by qualified specialists and our nursing wards are staffed by fully-trained nurses and veterinary interns 24 hours a day.

Facilities include:

- Fully staffed intensive care facilities
- 3 fully equipped operating theatres
- 3 operating microscopes
- Full anaesthetic monitoring for all cases
- Minimal invasive surgery equipment
- 1.5 Tesla Magnetic Resonance Imaging on-site
- Radiography, ultrasonography and scintigraphy
- Electrodiagnostic equipment (2), including hearing clinic
- Phacoemulsification, cryotherapy & electrolysis equipment
- Dedicated laser for ECP and retinopathy
- Dedicated chemotherapy unit, veterinary strontium probe
- Radioiodine treatment & ward
- Endoscopy, bronchoscopy, cystoscopy and rhinoscopy
- Telemetry electrocardiographic monitoring
- Hydrotherapy Pool House
- Video-otoscope & intradermal skin testing



Make an appointment
by calling:

01638 552700

24-hour emergency
referrals via telephone

Alternatively download a fax-back
appointment request form from
the website and fax back to
01638 555600

We accept direct insurance claims

For CPD events and
further information
visit:

www.aht.org.uk

The Centre for Small
Animal Studies provides
a world class clinical
referral and diagnostic
service that is
patient-focussed
and client
orientated.



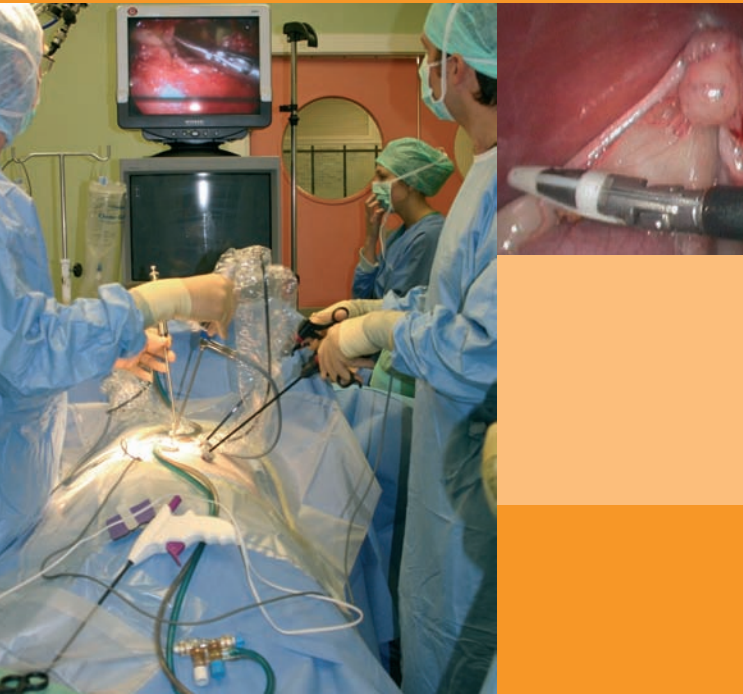
Animal Health Trust

Lanwades Park
Kentford
Newmarket
Suffolk CB8 7UU
Tel: +44 (0)1638 555648
Fax: +44 (0)1638 502427
E-mail: info@aht.org.uk
Web site: www.aht.org.uk
Registered Charity No. 209642



Animal Health Trust

New for 2008 Minimal Invasive Surgery



The soft tissue surgery service is now offering minimal invasive surgery as well as conventional techniques. Both Rob Furneaux and Manuel Jimenez-Paleaez have extensive experience with both laparoscopic and thoracoscopic techniques for management of surgeries including biopsies, lung lobectomies, neutering and prophylactic gastropexies. We welcome questions regarding this service or referrals for such procedures as well as encouraging CPD via telephone advice and 'seeing practice' on vets' specific referrals.

Clinical services

Ophthalmology

We offer a fully comprehensive referral service in the medical and surgical treatment of ophthalmic disorders in all species and encourage early referral.

Neurology/Neurosurgery

We can receive intracranial, spinal and neuromuscular referrals and emergencies on a 24-hour basis. The on-site MRI scanner, advanced neurosurgical equipment and electrodiagnostic facilities provide a comprehensive referral service along with a congenital deafness screening programme.

Internal medicine (canine & feline)

The unit provides a full clinical referral service in canine and feline medicine. We also offer radioiodine treatment.

Soft Tissue Surgery

The surgical team offers a 24 hour referral service for all types of soft tissue cases.

Dermatology

The dermatology unit offers a comprehensive referral service for all small animal and equine skin disorders.

Oncology

Our client orientated approach ensures the highest possible standard of care for our patients. We also offer a fax advice service.

Anaesthesia

The anaesthesia service is unique because one of our dedicated veterinary anaesthetists performs every anaesthetic. We are responsible for analgesia and intensive care in the hospital.

Diagnostic Imaging

The unit performs radiology, ultrasonography, MRI & scintigraphy as well as providing a film reading service for practitioners.

Nursing

The AHT prides itself on the exceptionally high standards of nursing care for all our patients. We are committed to providing specialist care on a 24 hour basis ensuring that each patient receives the best personal nursing care possible.

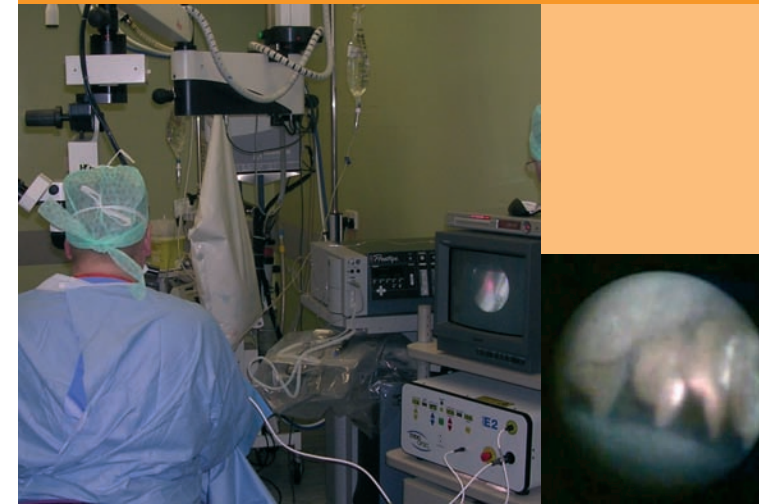
Hydrotherapy

The hydrotherapy pool is used during rehabilitation of our patients, but we also accept referrals for hydrotherapy.

Research interests

At the Trust, scientists and clinicians combine their skills to gain a better understanding of different diseases. Through our active programme of post graduate veterinary education, publications and lectures, the results of studies at the Trust are communicated to the veterinary profession and approximately 60 small animal based articles are published annually. As a result of the ever-expanding small animal clinical research programme, the *Small Animal Epidemiology Unit* was formed in 2007. In addition to carrying out independent research, the Unit provides epidemiological and statistical support for clinical research.

New for 2008 Novel glaucoma treatment: Endoscopic Cyclophotocoagulation (ECP)



Treatment for glaucoma in dogs is often unrewarding with the affected eye commonly enucleated due to blindness and chronic pain. The use of drainage devices has been attempted with only very limited success in dogs. ECP uses laser to accurately destroy the ciliary body that is responsible for aqueous production accurately via keyhole surgery under a general anaesthetic. Some cases require lens extraction at the same time as ECP, as in people. This device has already shown success in the USA and this is the first machine available in the UK. We hope ECP will help save many dogs' sight and encourage early referral of glaucoma cases.